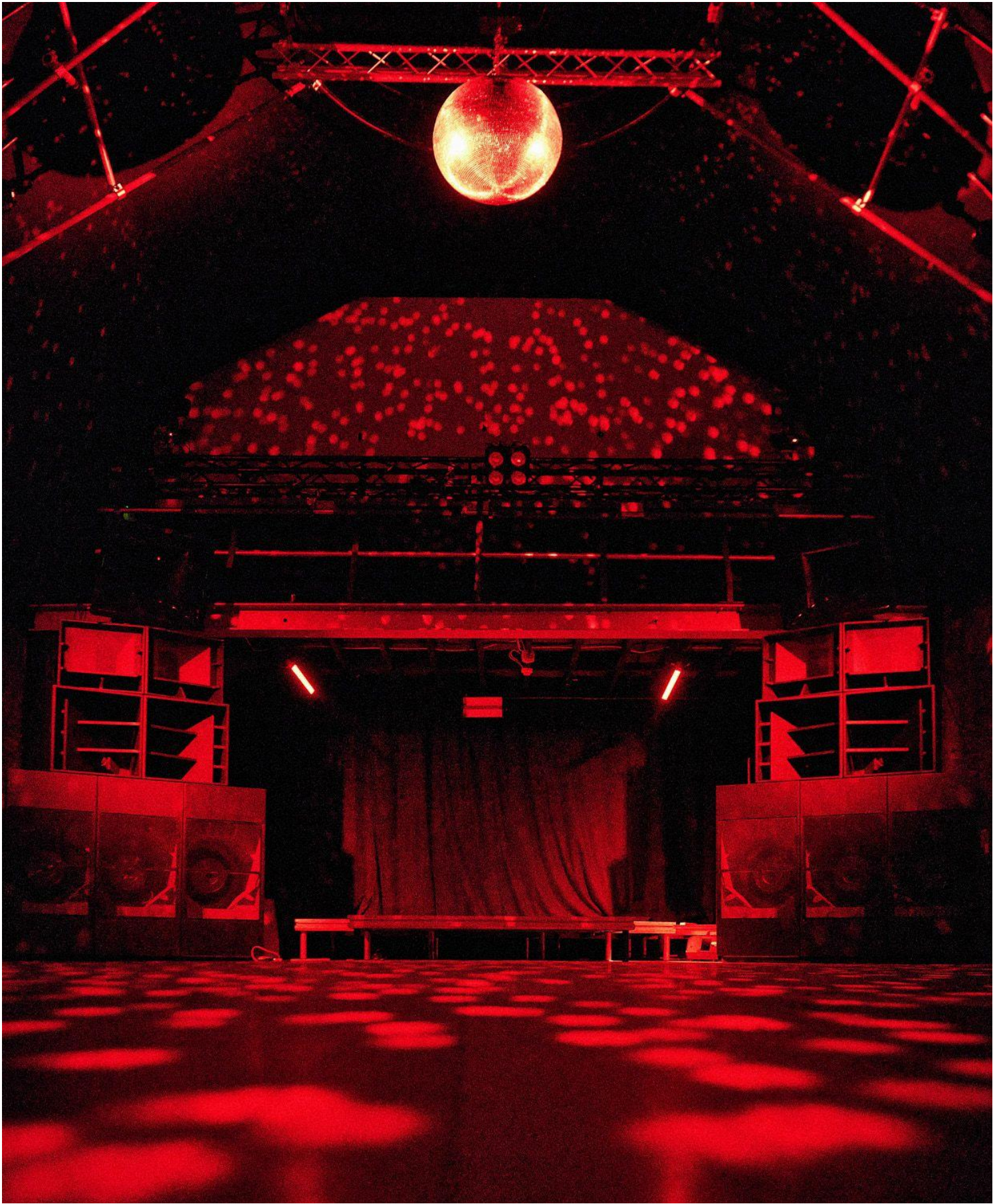


CLUB CHEEK
TECHNICAL SPECIFICATION & INFORMATION
302-304 Barrington Rd, London SW9 7JJ



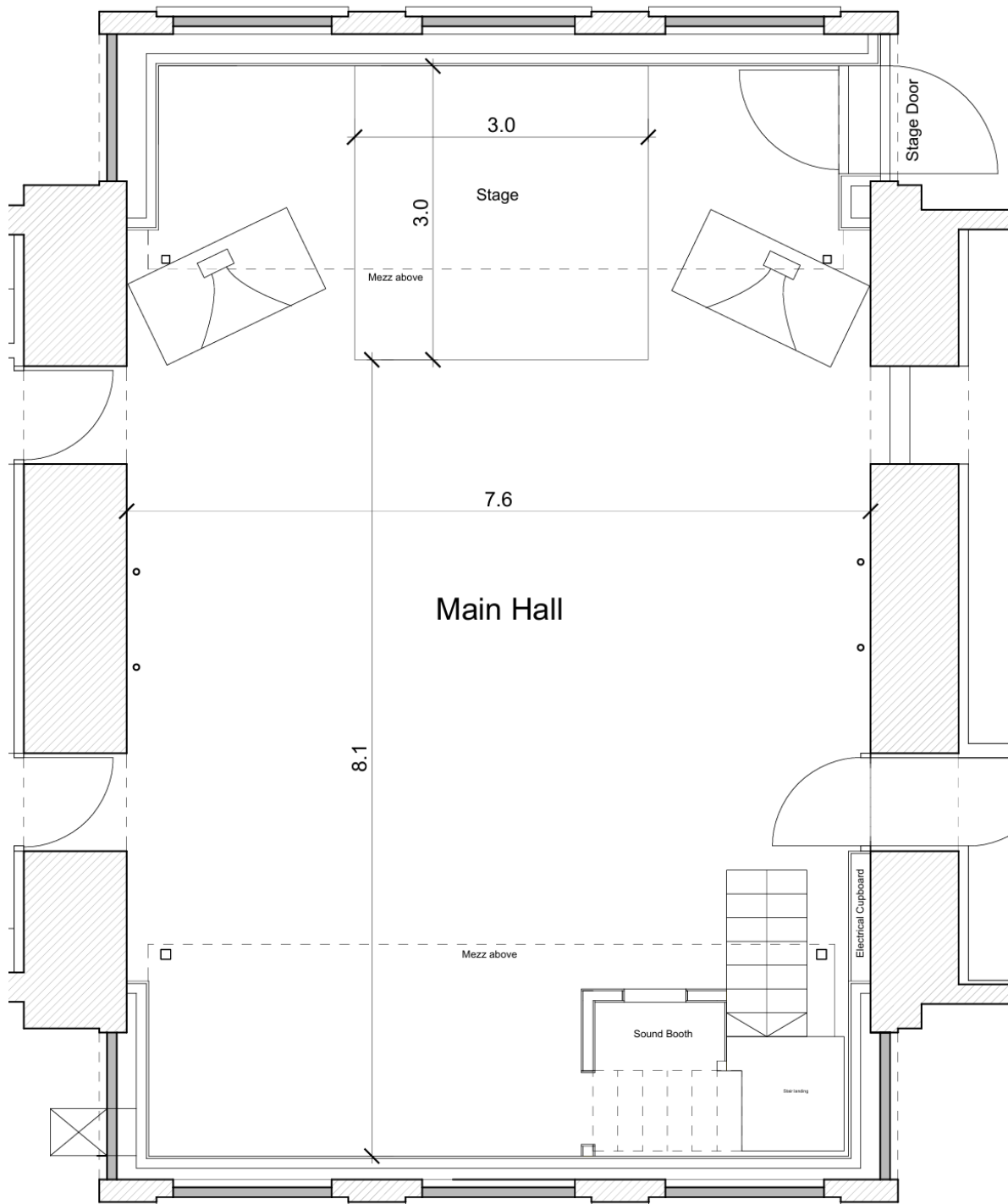
Audio Equipment	
Main PA System	<p>Custom-built 4-way full-range stereo:</p> <ul style="list-style-type: none"> - 6 x 18" PD1852 Subwoofers - 4 x 15" PD154 Bass - 4 x 12" Eighteen Sound 12ND610 Midrange - 2 x 2" Celestion AxiPeriodic 2050 with Large Format horn <p>Linea Research Amplifiers and DSP</p>
Monitors	<p>Left and Right custom booth monitors, Coaxial 12" full range 18 Sound 12NCX750H</p>
DJ Booth	<p>2x CDJ 3000 2x Technics 1210 Pioneer DJM A9 or Rotary valve mixer Other mixers and CDJs available on request. 2.4x0.6m(8x2ft)</p>
Live Sound	<p>1 x Midas M32R FOH mixer 1 x 16 channel Midas stage box.</p> <p>Voice Mics: Shure SM58, multiple 2x Sennheiser Wireless Percussion mics</p> <p>Assorted stands and cables DI boxes</p> <p>Guitar/Bass amps: Laney cab and head HH Combo Peavey Bass Combo Ampeg 410 with ampeg head</p> <p>Drum kit: Pearl with stands. No cymbals. Carpet.</p> <p>Stage Wedges 4 x wedge monitors (name brand) 2 x custom monitors Coaxial 12" full range 18 Sound 12NCX750H</p>

Staging & Main Hall
Modular and variable height system. Standard setup is 300mm high(1ft).

Standard performance stage is rectangular with a center extension. Dimensions: 3x3m (10x10ft). See plan on next page for layout and orientation.

The global dimensions of the main hall are 7.2m wide and 11.1m long. See plan on next page for layout and orientation.





Dimensions in meters

Lighting

Includes house lights, stage wash, stage key light, moving heads, ambient room lights
LED strobe
Smoke hazer

Red Laser array.

Venue lighting for events will be operated by the in house team. For more advanced lighting operations with precise cues or technical programming will require support from a lighting engineer who we can arrange to be available with prior notice.

Lights mounted on a central raised ring or from truss on the two railings at both ends of the room.

Additional lighting options available following prior discussion and agreement





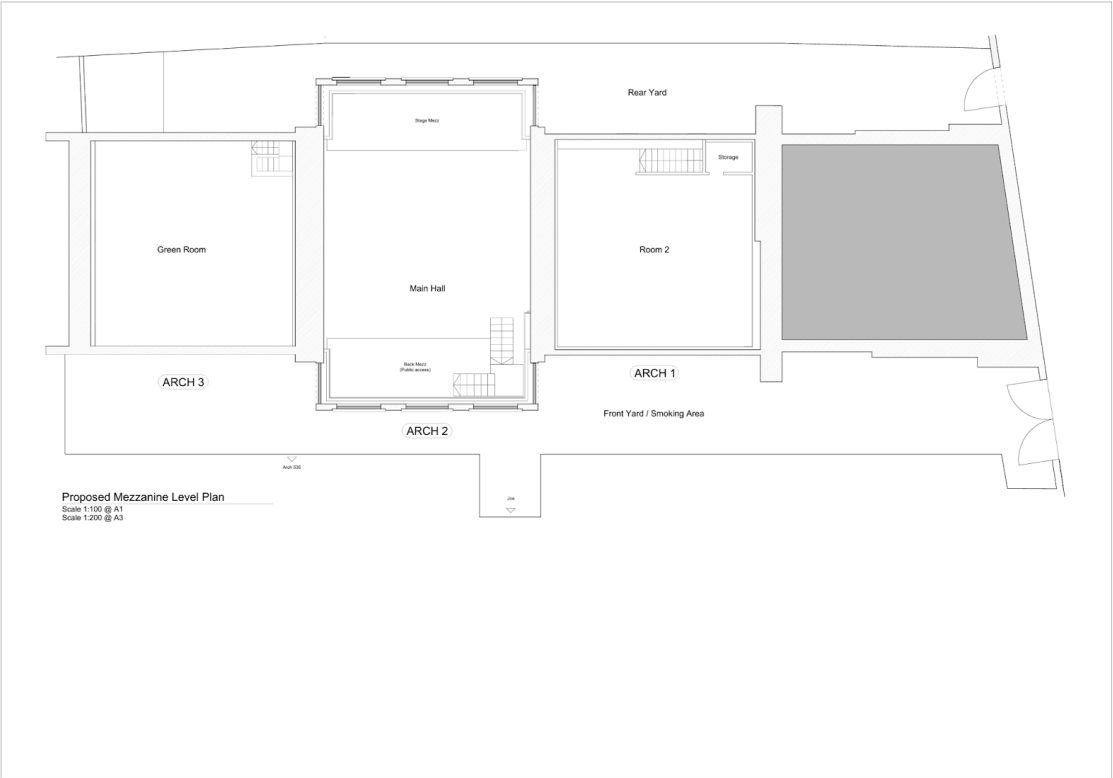
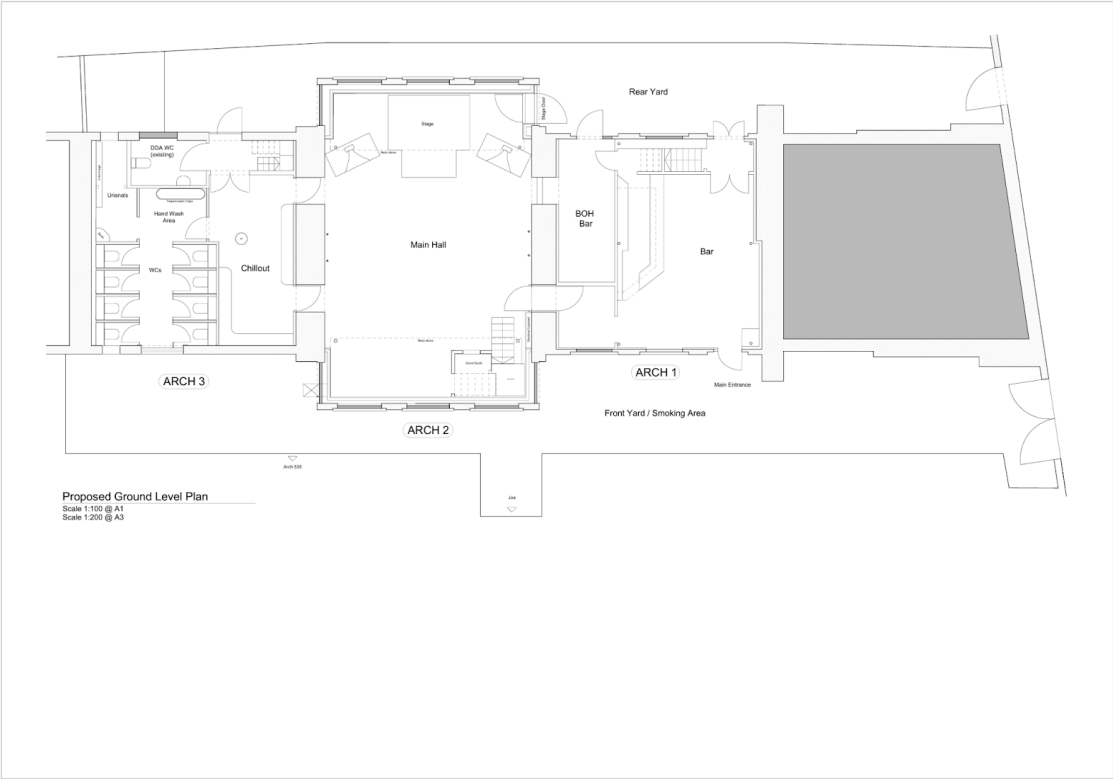
Additional AV Equipment

If any additional audio/visual equipment is required please let us know and we will hope to be able to accommodate you. We have access to a large range of equipment and can provide very competitive rental prices.

Green Room

Our Green Room is available for use by the promoter and performers. This is a shared space also used by the in house staff as office space. If privacy is a requirement for any performers this can be discussed. The room has seating, mirrors, running water, plates, mugs, cups, utensils and a fridge. Power is also available with multiple sockets. Please note, access is via steep set of wooden stairs. We are planning to change this to something more user friendly. If an alternative area is necessary this can be discussed.

General Arrangement Plans:



Venue Photos







